

Mech-Eye Deep Industrial 3D Camera

High Performance and High Cost-effectiveness

High Precision / Extended Field of View / Fast Speed / Stability and Reliability /
Easy Integration / Compatible with ROS / Competitive Price



Specification

Optimal Scanning Range: 1200 - 3500 mm

Near FOV: 970 × 1160 mm @ 1.2 m

Far FOV: 2830 × 3320 mm @ 3.5 m

Resolution: 2048 × 1536

Megapixels: 3.0 MP

Z Repeatability (σ): 1.0 mm @ 3 m

Accuracy: 3.0 mm @ 3 m

Typical Capture Time: 0.7 - 1.1 s

Software APIs: C++/Python/C#/GenICam/HALCON

Baseline: 400 mm

Dimensions: 481 × 98 × 145 mm

Weight: 4.3 kg

Operating Temperature: 0-45 °C

Interface: Ethernet

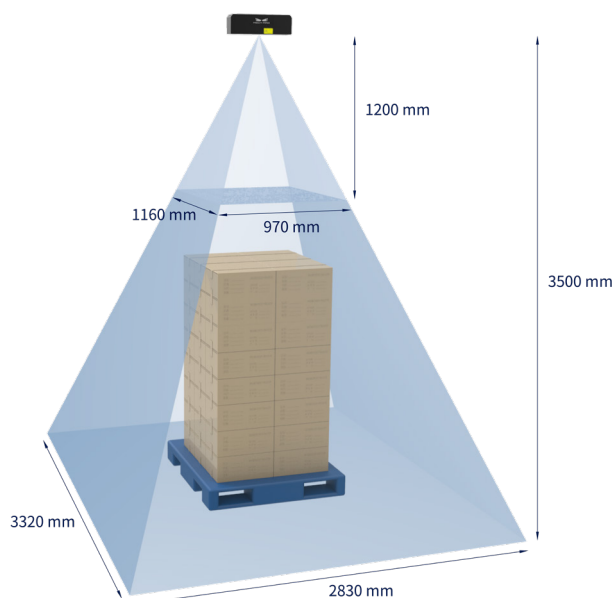
Power Supply: 24V DC

Safety and EMC: CE/FCC/VCCI

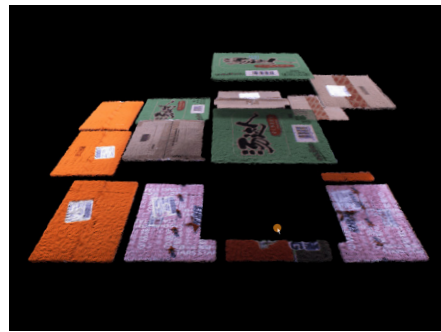
Protection Class: IP65

Cooling: Passive

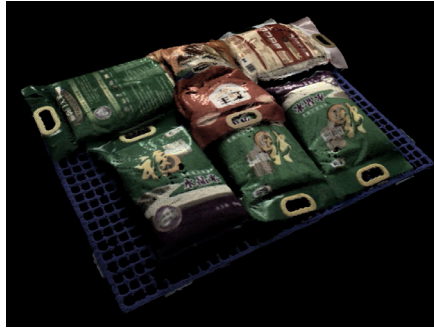
Field of View (mm)



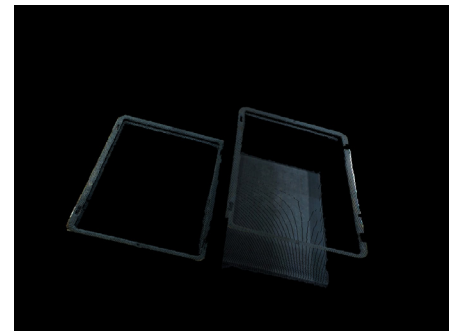
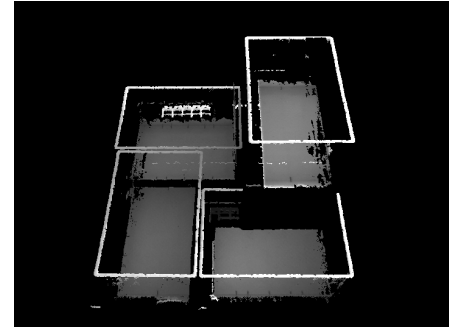
Point Clouds



Tightly-Packed Cartons with Patterns or Tapes



Tightly-Packed Sacks with Patterns



Tightly-Stacked Bins

Applicable to palletizing and depalletizing applications that require a large field of view.

