

Mech-Eye NANO

Palm-sized Industrial 3D Camera

High Precision • Small Size • Fast Acquisition
High Flexibility • Easy Integration • Competitive Price



Specification

Optimal Scanning Range: 300 - 600 mm

Near FOV: 220 × 160 mm @ 0.3 m

Far FOV: 430 × 320 mm @ 0.6 m

Resolution: 1280 × 1024

Megapixels: 1.3 MP

Operating Temperature: 0 - 45 °C

Communication Interface: Ethernet

Software APIs: C++/Python/C#/GenICam/HALCON

Class: IP65

Image Sensor : Sony CMOS for High-end Machine Vision

Z Repeatability (σ): 0.1 mm @ 0.5 m

Accuracy: 0.1 mm @ 0.5 m

Typical Capture Time: 0.6 - 1.1 s

Baseline: 68 mm

Dimensions: 145 × 51 × 85 mm

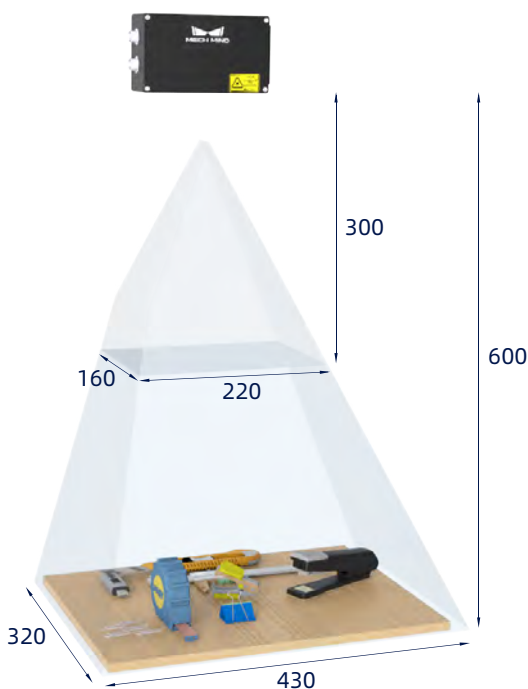
Weight: 0.7 kg

Power Supply: 24V DC

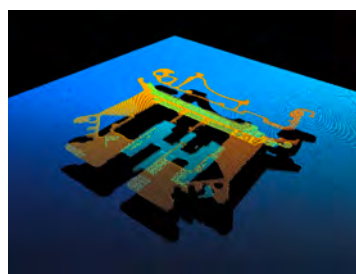
Safety and EMC: CE/FCC/VCCI

Cooling: Passive

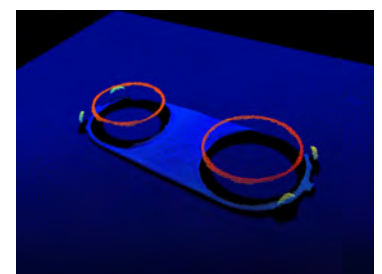
Field of View (mm)



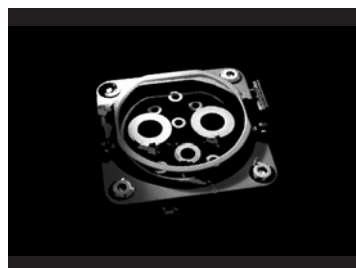
Point Clouds



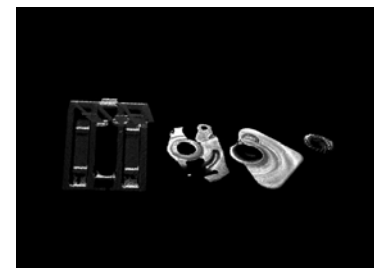
Precision Component



0.68 mm Thick Workpiece



Car Charging Port



Small Workpieces



Mech-Mind Robotics
www.mech-mind.com